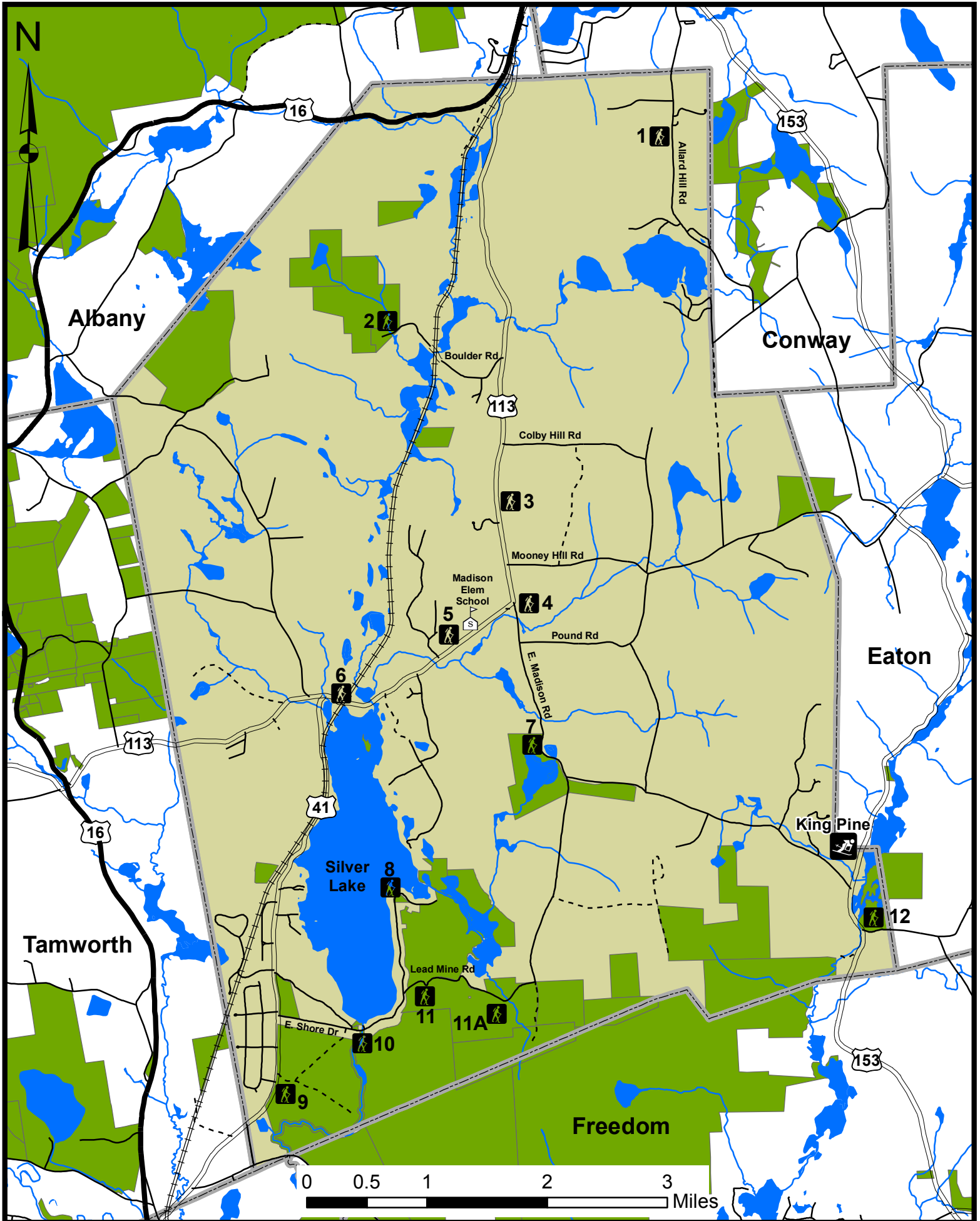


Hiking Trail Locations in Madison, NH



Property/Trail Name	Trailhead/Parking GPS Coordinates	Difficulty	Water	Views	Fishing	Hunting	Notes
1. Wold Property	N43°57'13" W71°07'9"	M	N	Y	N	N	
2. Madison Boulder	N43°56'1" W71°09'46"	E	N	N	N	N	Large glacial erratic boulder
3. Hathaway Trail System	N43°54'39" W71°08'54"	M/D	N	Y	N	N	Walk the labyrinth
4. Madison Cascades	N43°53'57" W71°08'44"	M	Y	Y	Y	N	Waterfalls
5. Ward Parcel	N43°53'44" W71°09'16"	E	N	N	N	N	
6. Railroad Tracks	N43°53'15" W71°10'25"	E	N	Y	N	N	
7. McNair Easement	N43°52'56" W71°08'30"	E	Y	Y	Y	Y	Hike around Durgin Pond
8. Hurricane Pt.	N43°51'52" W71°09'56"	E	Y	Y	N	N	e.e. cummin gs inspirati on point
9. Ossipee Pine Barrens	N43°50'32" W71°11'2"	E	N	N	N	Y	Globally rare pitch pine forests
10. West Branch	N43°50'53" W71°10'15"	E	Y	N	Y	Y	
11. Goodwin-Burke Forest	N43°51'14" W71°09'45"	E/M	N	Y	N	Y	Jackman Ridge Loop
11A. Goodwin-Burke Forest	N43°51'7" W71°08,48"	E	Y	Y	Y	Y	Black Brook Loop
12. Hoyt Wildlife Sanctuary	N43°51'31" W71°05'17"	E/M	Y	Y	N	N	Audubon Sanctuary

Y: Yes, N: No, E: Easy, M: Moderate, D: Difficult, Water Access: No boat launching permitted,